

BALTIC X

XICATO

Baltic X adjustable LED spotlight with Xicato LED light engine, interchangeable reflectors, integral 1-10v dimmable driver, rotary on-board dimmer and finished white (RAL 9010). Suitable for track mounting, universal 3 circuit type adaptor comes as standard. IP20.

To specify Baltic X both the Product Number and the Engine number are needed. Choose the required Series, Colour Temperature (K) and Colour Rendering Index (CRI - Ra). Then choose the reflector beam angle.

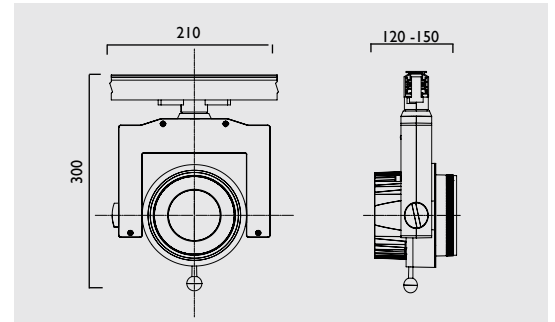
Reflector holder Type A comes as part of the body assembly and has interchangeable reflectors as shown. One reflector comes with the spotlight and is the clients choice. Additional reflectors can be ordered separately.

Examples:

D1000/142510 plus D3100 is Baltic X Artist series, 4000K, Ra95 with 24° medium beam reflector.

D1100/200210 plus D3400 is Baltic X Standard series, 2700K, Ra80 with 80° washer beam reflector.

D1200/142310 plus D3300 is Baltic X Vibrant series, 3000K, Ra95 with 67° wide flood reflector.



Xicato XSM LED Modules

XSM Standard Series ≥ Ra80

2 step MacAdam, 2000 lumens, 28.8W

Product and Engine Number	Colour Temperature
D1100 / 200210	2700K
D1100 / 200310	3000K
D1100 / 200410	3500K
D1100 / 200510	4000K

XSM Artist Series ≥ Ra95

2 step MacAdam, 1420 lumens, 27.7W

Product and Engine Number	Colour Temperature
D1000 / 142210	2700K
D1000 / 142310	3000K
D1000 / 142410	3500K
D1000 / 142410	4000K

XSM Vibrant Series ≥ Ra80

2 step MacAdam, 2000 lumens, 28.8W

Product and Engine Number	Colour Temperature
D1200 / 200310	3000K

XSM Vibrant Series ≥ Ra95

2 step MacAdam, 1420 lumens, 27.7W

Product and Engine Number	Colour Temperature
D1300 / 142410	3000K

The latest Xicato XTM LED modules will soon be available but can be specified as below. Please contact us for availability.

XTM Standard Series ≥ Ra80

2 step MacAdam, 2000 lumens, 19.5W

Product and Engine Number	Colour Temperature
D1400 / 20A210	2700K
D1400 / 20A310	3000K
D1400 / 20A410	3500K
D1400 / 20A510	4000K

XTM Artist Series ≥ Ra95

2 step MacAdam, 2000 lumens, 26.4W

Product and Engine Number	Colour Temperature
D1500 / 20G210	2700K
D1500 / 20G310	3000K
D1500 / 20G410	3500K
D1500 / 20G510	4000K

XTM Vibrant Series ≥ Ra80

2 step MacAdam, 2000 lumens, 19.5W

Product and Engine Number	Colour Temperature
D1600 / 20H310	3000K

XTM Vibrant Series ≥ Ra95

2 step MacAdam, 2000 lumens, 26.4W

Product and Engine Number	Colour Temperature
D1700 / 20J310	3000K

Reflector holder Type A



Reflectors



Medium
XSM LED - D3100

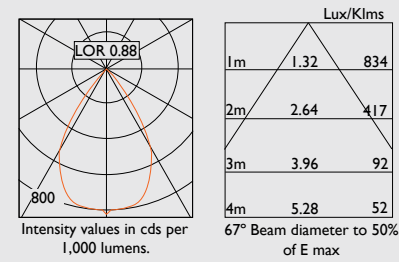
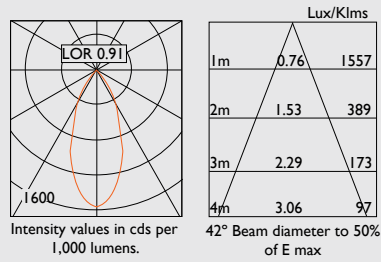
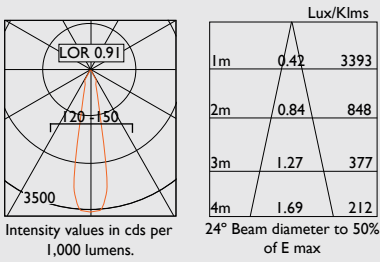


Wide
XSM LED - D3200



Flood
XSM LED - D3300

Photometric data for XSM LEDs

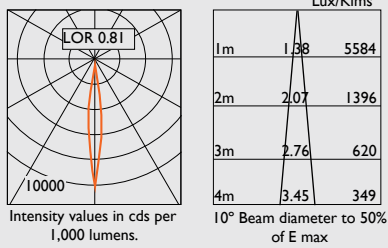


Reflector holder Type B complete with reflector



Narrow
XSM LED - D3000

Photometric data for XSM LEDs

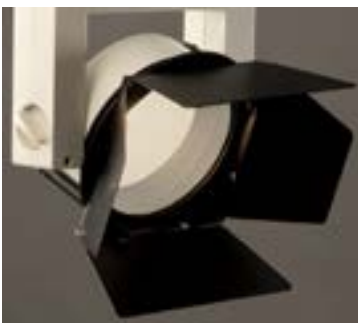
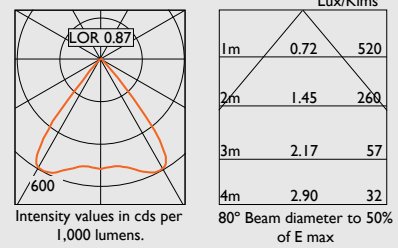


Reflector holder Type C complete with reflector



Washer
XSM LED - D3400

Photometric data for XSM LEDs



Attachments

Product No	Description
------------	-------------

D3700	Barn Doors
-------	------------

Barn Doors D3700, only suitable for reflector holder Type A