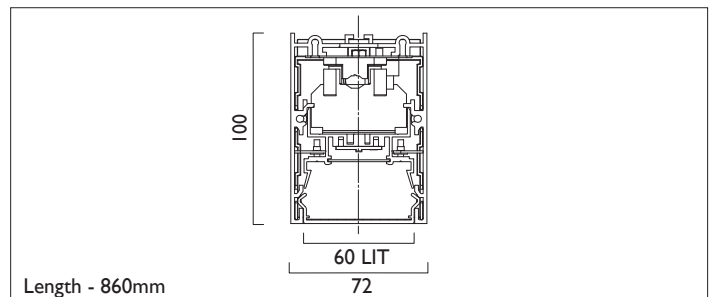
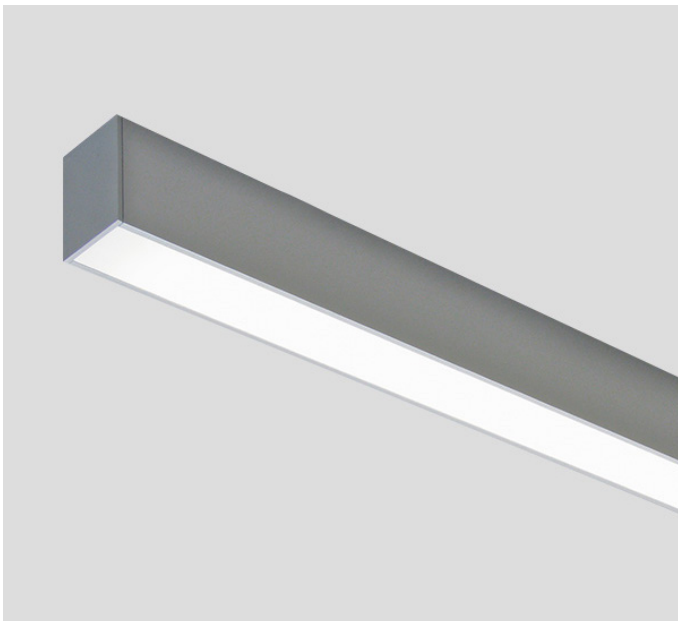




# LIGHTLINE LED 60

SURFACE / PENDANT

LIGHTLINE LED 60 can be surface mounted or suspended from the ceiling. It consists of an aluminium extruded profile constructed as individual modules in various chassis lengths, which come complete with integral driver. Optical control is provided by a clip in opal diffuser.



|                |                                       |
|----------------|---------------------------------------|
| Product Number | LI 303                                |
| Lamp Type      | LED, 3510 lumens, 4000K, Ra>80, 23.4W |
| Construction   | Aluminium / Steel / Plastic           |
| Diffuser       | Opal                                  |
| Ceiling Trim   | White RAL 9010                        |
| IP             | IP40                                  |
| Control        | Driver                                |

EN 60598-1  
WEE/AE0290TY

