

M FLUX M5 - SUMMARY

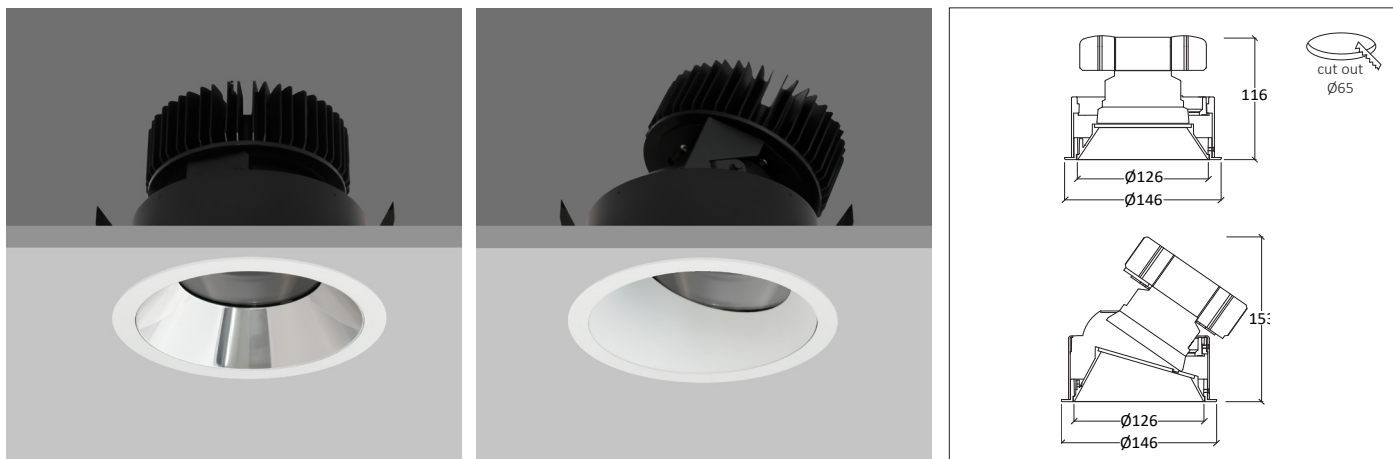


M-FLUX M5 FIXED/DIRECTIONAL Round recessed downlighter with standard white ceiling trim and a choice of deep cone reflector finish and beam distribution. The high-quality precision lens and deep cone aluminium reflector gives visual comfort. Driver mounted remotely.

The M-FLUX M5 is easy to install and incorporates the latest, high efficiency LED technology. Colour consistency through life is ensured by state-of-the-art components and passive cooling aluminium heat sinks.

Standard colour temperatures: 2700K, 3000K, 4000K, colour rendering Ra>90 2-step Macadam are all available. Life 50000 hours.

A choice of drivers provide fixed supply or dimming to project requirements. IP20/IP44/IP54 durable, high specification die-cast construction.



LED	Beam Angle	Lumen Source	LED W	CCT	CRI	Macadam	IP Rating
Ultra Narrow Module	8°	700 lm	6W	2700K, 3000K, 4000K	>90	2 step	IP20, IP44, IP54
Narrow Module	10°	1700 lm 2000 lm	16W 20W	2700K, 3000K, 4000K	>90	2 step	IP20, IP44, IP54
Standard Module	16°, 25°, 33°, 50°	1900 lm 2100 lm 2700 lm 3300 lm	15W 17W 24W 33W	2700K, 3000K, 4000K	>90	2 step	IP20, IP44, IP54
High Power Module	23°, 32°, 40°, 52°	3100 lm 3500 lm 4000 lm 4500 lm 5000 lm	24W 28W 33W 39W 45W	2700K, 3000K, 4000K	>90	2 step	IP20, IP44, IP54

Reflector Finish



Specular Silver



Satin Silver



Black



White



Gold

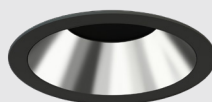


Bronze

Standard Trim Finish



White



Black

Accessories



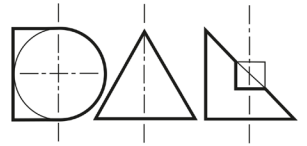
Honeycomb Louvre



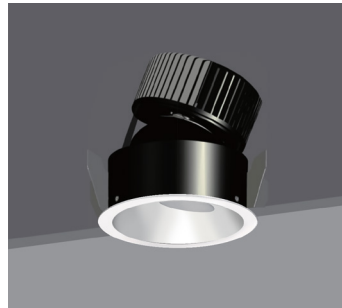
Elliptical Film



Sandblasted Glass



Fixed Round



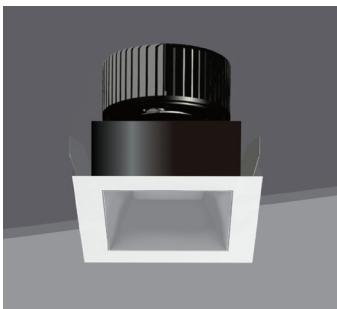
Directional Round



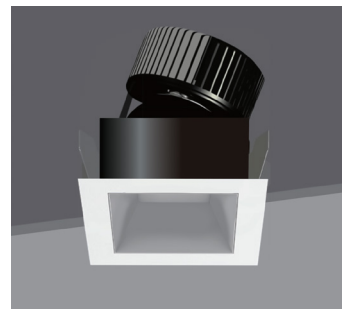
Wallwasher Round



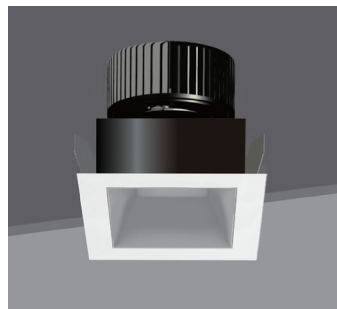
Trimless Round



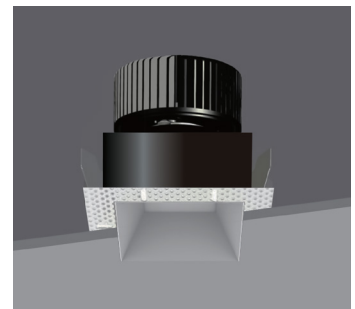
Fixed Square



Directional Square



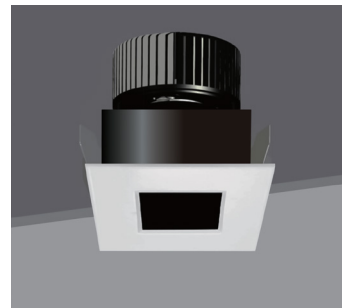
Wallwasher Square



Trimless Square



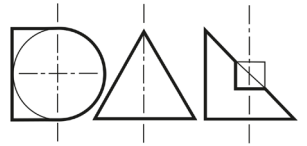
Pinhole Round



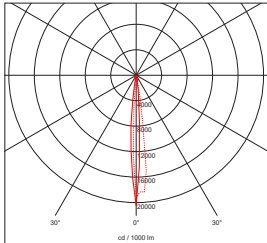
Pinhole Square

M7F3131J350R320 (PRODUCT CODING EXAMPLE)

Series	Type	Distribution	Reflector Colour	Initial Lumens	LED	Colour Temp	Driver Protocol	Emergency Protocol	Shape	Trim Colour	IP	Accessories	
M5	F FIXED	1 1-10°	1 SPECULAR SILVER	07 700 lm	J CREE	2 2700K	0 NON DIM	0 NONE	R ROUND	L Trimless	2 IP20	0 NONE	
	A ADJUSTABLE	2 11-20°	2 SATIN SILVER	20 2000 lm	CRI >90	3 3000K	1 1-10V	E EMERGENCY	S SQUARE	3 White	4 IP44	1 HONEYCOMB	
	S SINGLE	3 21-30°	3 BLACK	27 2700 lm	2 STEPS	5 4000K	5 DALI			4 Black	5 IP54	2 ELLIPTICAL FILM	
	D DOUBLE WALLWASH	4 31-40°	4 WHITE	4 WHITE	33 3300 lm etc			7 LEAD / TRAIL					3 FROSTED GLASS
		5 41-50°	5 GOLD	5 GOLD				8 CASAMBI					
		6 51-60°	6 BRONZE	6 BRONZE				9 ADDRESSABLE (EMERGENCY)					
		7 COPPER	7 COPPER	7 COPPER									
M5	F	3	1	31	J	3	5	0	R	3	2	0	

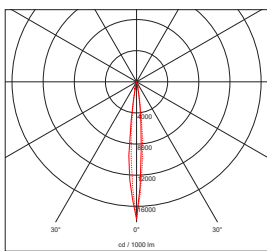


LED	Beam Angle	Lumen Source	Delivered Lumens	LOR	Luminous Intensity	Current	Forward Voltage	LED W	CRI	Macadam
Ultra Narrow Module	8°	700 lm	598 lm	≤ 85%	18125 cd	700mA	9.3V	6W	>90	2 step



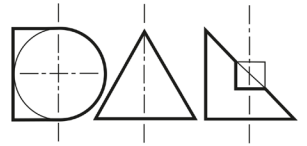
8°		700 lm	
1	0.14	18092	
2	0.28	4523	
3	0.42	2010	
4	0.56	1131	
5	0.70	724	
H(m)	Dia (m)	E(lx)	

LED	Beam Angle	Lumen Source	Delivered Lumens	LOR	Luminous Intensity	Current	Forward Voltage	LED W	CRI	Macadam
Narrow Module	10°	1700 lm 2000lm	1538 lm 1750 lm	≤ 91%	30626 cd 34911 cd	500mA 600mA	33.5V 33.9V	16W 20W	>90	2 step

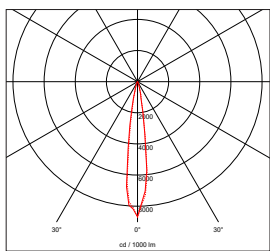


10°		1700 lm	2000 lm
1	0.17	30612	34895
2	0.35	7653	8724
3	0.52	3401	3877
4	0.70	1913	2181
5	0.86	1224	1396
H(m)	Dia (m)	E(lx)	E(lx)

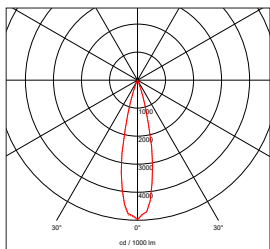
- (1) Height subject to the power module.
- (2) Electrical Data based on 90CRI, 3000K, Tc=85°C.
- (3) Tolerance range for optical and electrical data: ±10%.



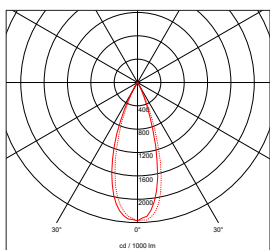
LED	Beam Angle	Lumen Source	Delivered Lumens	LOR	Luminous Intensity	Current	Forward Voltage	LED W	CRI	Macadam
Standard Module	16°	1900 lm	1561 lm	≤ 84%	16555 cd	450mA	34.0V	15W	>90	2 step
		2100 lm	1723 lm		18280 cd	500mA	34.3V	17W		
		2700 lm	2236 lm		23742 cd	700mA	35.6V	24W		
		3300 lm	2767 lm		29419 cd	900mA	36.6V	33W		
	25°	1900 lm	1673 lm	≤ 90%	9496 cd	450mA	34.0V	15W	>90	2 step
		2100 lm	1846 lm		10466 cd	500mA	34.3V	17W		
		2700 lm	2395 lm		13573 cd	700mA	35.6V	24W		
		3300 lm	2969 lm		16780 cd	900mA	36.6V	33W		
	33°	1900 lm	1617 lm	≤ 88%	4518 cd	450mA	34.0V	15W	>90	2 step
		2100 lm	1801 lm		5029 cd	500mA	34.3V	17W		
		2700 lm	2345 lm		6556 cd	700mA	35.6V	24W		
		3300 lm	2917 lm		8164 cd	900mA	36.6V	33W		
	50°	1900 lm	1448 lm	≤ 80%	2159 cd	450mA	34.0V	15W	>90	2 step
		2100 lm	1619 lm		2414 cd	500mA	34.3V	17W		
		2700 lm	2117 lm		3164 cd	700mA	35.6V	24W		
		3300 lm	2635 lm		3938 cd	900mA	36.6V	33W		



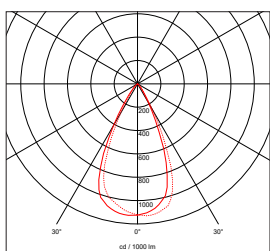
16°		1900 lm	2100 lm	2700 lm	3300 lm
1	0.26	16555	18280	23742	29419
2	0.52	4139	4570	5935	7355
3	0.79	1839	2031	2638	3269
4	1.05	1035	1142	1484	1839
5	1.31	662	731	950	1177
H(m)	Dia (m)	E(lx)	E(lx)	E(lx)	E(lx)



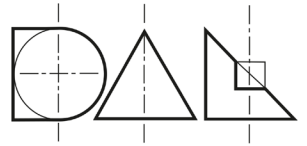
25°		1900 lm	2100 lm	2700 lm	3300 lm
1	0.42	9496	10466	13573	16780
2	0.84	2374	2616	3393	4195
3	1.26	1055	1163	1508	1864
4	1.68	594	654	848	1049
5	2.10	380	419	543	671
H(m)	Dia (m)	E(lx)	E(lx)	E(lx)	E(lx)



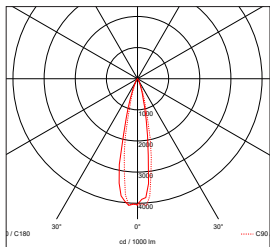
33°		1900 lm	2100 lm	2700 lm	3300 lm
1	0.63	4514	5024	6551	8157
2	1.27	1128	1256	1638	2039
3	1.91	502	558	728	906
4	2.55	282	314	409	510
5	3.19	181	201	262	326
H(m)	Dia (m)	E(lx)	E(lx)	E(lx)	E(lx)



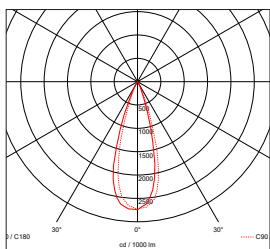
50°		1900 lm	2100 lm	2700 lm	3300 lm
1	0.93	2146	2399	3143	3912
2	1.85	537	600	786	978
3	2.78	239	267	350	435
4	3.71	134	150	197	245
5	4.64	86	96	126	157
H(m)	Dia (m)	E(lx)	E(lx)	E(lx)	E(lx)



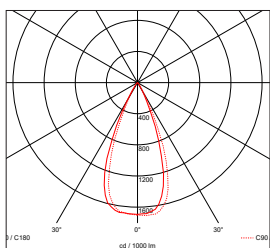
LED	Beam Angle	Lumen Source	Delivered Lumens	LOR (Up to)	Luminous Intensity	Current	Forward Voltage	LED W	CRI	Macadam
High Power Module	23°	3100 lm	2526 lm	≤ 82%	12614 cd	700mA	34.5V	24W	>90	2 step
		3500 lm	2852 lm		14252 cd	800mA	34.9V	28W		
		4000 lm	3265 lm		16264 cd	950mA	35.6V	33W		
		4500 lm	3470 lm		17283 cd	1100mA	36.1V	39W		
		5000 lm	3949 lm		19667 cd	1250mA	36.7V	45W		
	32°	3100 lm	2574 lm	≤ 86%	8542 cd	700mA	34.5V	24W	>90	2 step
		3500 lm	2967 lm		9825 cd	800mA	34.9V	28W		
		4000 lm	3429 lm		11343 cd	950mA	35.6V	33W		
		4500 lm	3663 lm		12100 cd	1100mA	36.1V	39W		
		5000 lm	4180 lm		13801 cd	1250mA	36.7V	45W		
	40°	3100 lm	2644 lm	≤ 86%	5299 cd	700mA	34.5V	24W	>90	2 step
		3500 lm	2992 lm		5979 cd	800mA	34.9V	28W		
		4000 lm	3431 lm		6859 cd	950mA	35.6V	33W		
		4500 lm	3647 lm		7298 cd	1100mA	36.1V	39W		
		5000 lm	4158 lm		8322 cd	1250mA	36.7V	45W		
	52°	3100 lm	2374 lm	≤ 78%	3165 cd	700mA	34.5V	24W	>90	2 step
		3500 lm	2664 lm		3546 cd	800mA	34.9V	28W		
		4000 lm	3054 lm		4066 cd	950mA	35.6V	33W		
		4500 lm	3240 lm		4320 cd	1100mA	36.1V	39W		
		5000 lm	3903 lm		5246 cd	1250mA	36.7V	45W		



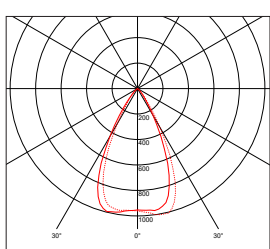
23°		3100 lm	3500 lm	4000 lm	4500 lm	5000 lm
1	0.40	12608	14245	16254	17274	19650
2	0.80	3152	3561	4064	4318	4913
3	1.20	1401	1583	1806	1919	2183
4	1.60	788	891	1016	1080	1228
5	2.00	504	570	651	691	786
H(m)	Dia (m)	E(lx)	E(lx)	E(lx)	E(lx)	E(lx)



32°		3100 lm	3500 lm	4000 lm	4500 lm	5000 lm
1	0.58	8538	9821	11336	12092	13801
2	1.15	2135	2455	2834	3023	3450
3	1.73	949	1091	1260	1344	1533
4	2.31	534	614	709	756	863
5	2.89	342	393	454	484	552
H(m)	Dia (m)	E(lx)	E(lx)	E(lx)	E(lx)	E(lx)



40°		3100 lm	3500 lm	4000 lm	4500 lm	5000 lm
1	0.79	5286	5964	6842	7277	8296
2	1.58	1322	1491	1710	1819	2074
3	2.37	588	663	761	809	922
4	3.17	331	373	428	455	519
5	3.96	212	239	274	291	332
H(m)	Dia (m)	E(lx)	E(lx)	E(lx)	E(lx)	E(lx)



52°		3100 lm	3500 lm	4000 lm	4500 lm	5000 lm
1	1.02	2999	3351	3842	4081	5005
2	2.03	750	838	961	1020	1251
3	3.05	333	373	427	454	556
4	4.07	188	210	241	255	313
5	5.09	120	134	154	164	200
H(m)	Dia (m)	E(lx)	E(lx)	E(lx)	E(lx)	E(lx)