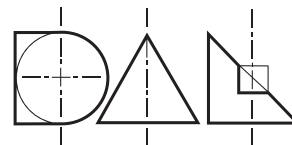


M-FLUX M6-145 - SUMMARY

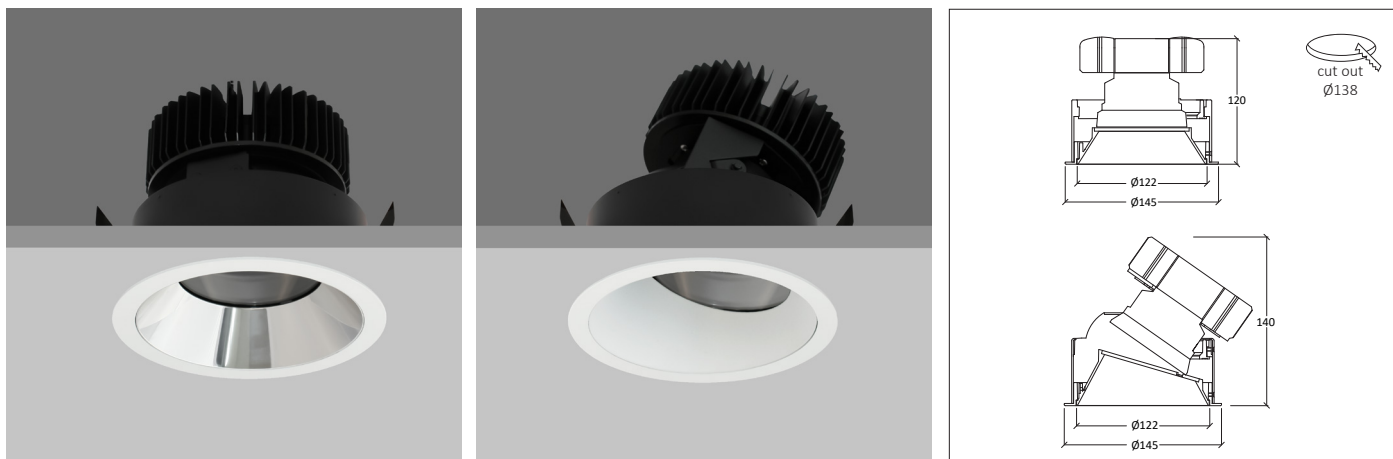


M-FLUX M6 recessed downlighter with standard white ceiling trim and a choice of deep cone reflector finish and beam distribution. The high-quality precision lens and deep cone aluminium reflector gives visual comfort. Driver mounted remotely.

The M-FLUX M6 is easy to install and incorporates the latest, high efficiency LED technology. Colour consistency through life is ensured by state-of-the-art components and passive cooling aluminium heat sinks.

Standard colour temperatures: 2700K, 3000K, 4000K, colour rendering Ra>90 2-step Macadam are all available. Life 50000 hours.

A choice of drivers provide fixed supply or dimming to project requirements. IP20/IP44/IP54 durable, high specification die-cast construction.



LED	Beam Angle	Lumen Source	LED W	CCT	CRI	Macadam	IP Rating
Ultra Narrow Module	8°	700 lm	6W	2700K, 3000K, 4000K	>90	2 step	IP20, IP44, IP54
Narrow Module	10°	1700 lm 2000 lm	16W 20W	2700K, 3000K, 4000K	>90	2 step	IP20, IP44, IP54
Standard Module	16°, 25°, 33°, 50°	2170 lm 2380 lm 3160 lm	15W 17W 24W	2700K, 3000K, 4000K	>90	2 step	IP20, IP44, IP54
High Power Module	23°, 32°, 40°, 52°	3590 lm 4060 lm 4530 lm	23W 26W 30W	2700K, 3000K, 4000K	>90	2 step	IP20, IP44, IP54

Reflector Finish



Specular Silver



Satin Silver



Black



White



Gold

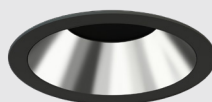


Bronze

Standard Trim Finish



White



Black

Accessories



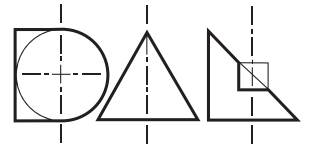
Honeycomb Louvre



Elliptical Film



Sandblasted Glass



Fixed Round



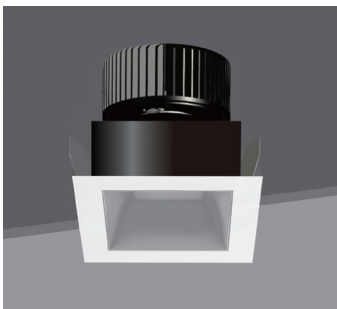
Directional Round



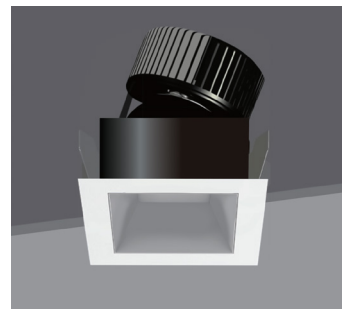
Wallwasher Round



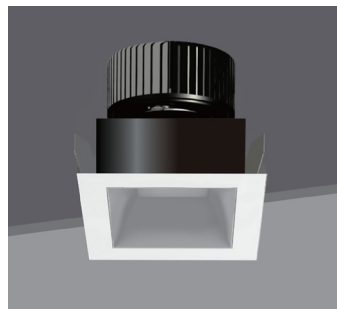
Trimless Round



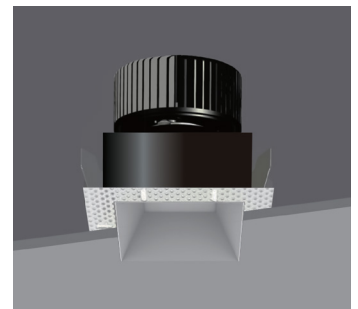
Fixed Square



Directional Square



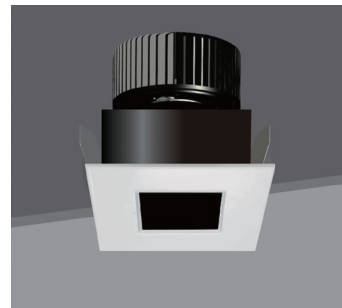
Wallwasher Square



Trimless Square



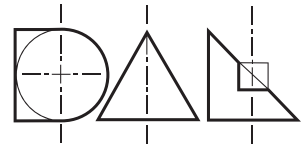
Pinhole Round



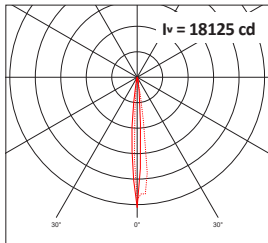
Pinhole Square

PRODUCT CODING EXAMPLE: M6F3107J350R320

Series	Type	Distribution	Reflector Colour	Initial Lumens	LED	Colour Temp	Driver Protocol	Emergency Protocol	Shape	Trim Colour	IP	Accessories
M6	F FIXED A ADJUSTABLE S SINGLE D DOUBLE WALLWASH	1 1-10° 2 11-20° 3 21-30° 4 31-40° 5 41-50° 6 51-60°	1 SPECULAR SILVER 2 SATIN SILVER 3 BLACK 4 WHITE 5 GOLD 6 BRONZE	07 700 lm 43 4350 lm etc	J CREE	2 2700K 3 3000K 5 4000K	0 NON DIM 1 1-10V 5 DALI 7 LEAD / TRAIL 8 CASAMBI 9 ADDRESSABLE (EMERGENCY)	0 NONE E EMERGENCY	R ROUND S SQUARE	L Trimless 3 Black 4 White	2 IP20 4 IP44 5 IP54	0 NONE 1 HONEYCOMB 2 ELLIPTICAL FILM 3 FROSTED GLASS
M6	F	3	1	07	J	3	5	0	R	3	2	0

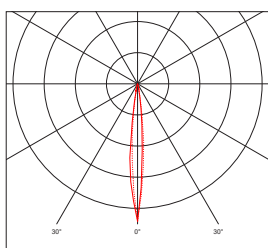


LED	Beam Angle	Lumen Source	Delivered Lumens	LOR	Current	Forward Voltage	LED W	CRI	Macadam
Ultra Narrow Module	8°	700 lm	598 lm	≤ 85%	700mA	9.3V	6W	>90	2 step



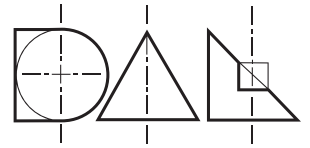
8°	
1	0.14
2	0.28
3	0.42
4	0.56
5	0.70
H(m)	Dia (m)

LED	Beam Angle	Lumen Source	Delivered Lumens	LOR	Current	Forward Voltage	LED W	CRI	Macadam
Narrow Module	10°	1700 lm 2000lm	1538 lm 1750 lm	≤ 91%	500mA 600mA	33.5V 33.9V	16W 20W	>90	2 step

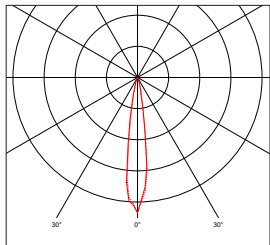


10°	
1	0.17
2	0.35
3	0.52
4	0.70
5	0.86
H(m)	Dia (m)

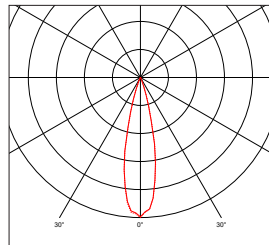
- (1) Height subject to the power module.
- (2) Electrical Data based on 90CRI, 3000K.
- (3) Tolerance range for optical and electrical data: ±10%.



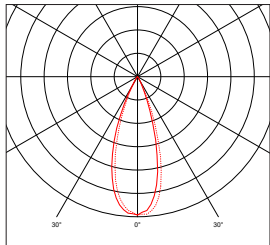
LED	Beam Angle	Lumen Source	Delivered Lumens	LOR	Current	Forward Voltage	LED W	CRI	Macadam
Standard Module	16°	2170 lm	1783 lm	≤ 84%	450mA	34.0V	15W	>90	2 step
		2380 lm	1953 lm		500mA	34.3V	17W		
		3160 lm	2617 lm		700mA	35.6V	24W		
	25°	2170 lm	1911 lm	≤ 90%	450mA	34.0V	15W	>90	2 step
		2380 lm	2092 lm		500mA	34.3V	17W		
		3160 lm	2802 lm		700mA	35.6V	24W		
	33°	2170 lm	1847 lm	≤ 88%	450mA	34.0V	15W	>90	2 step
		2380 lm	2041 lm		500mA	34.3V	17W		
		3160 lm	2744 lm		700mA	35.6V	24W		
	50°	2170 lm	1653 lm	≤ 80%	450mA	34.0V	15W	>90	2 step
		2380 lm	1853 lm		500mA	34.3V	17W		
		3160 lm	2478 lm		700mA	35.6V	24W		



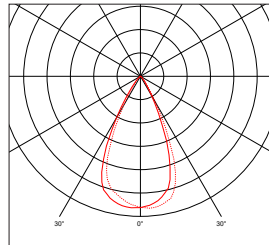
16°	
1	0.26
2	0.52
3	0.79
4	1.05
5	1.31
H(m)	Dia (m)



25°	
1	0.42
2	0.84
3	1.26
4	1.68
5	2.10
H(m)	Dia (m)

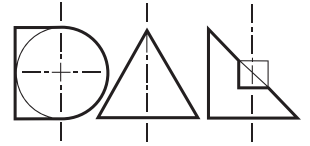


33°	
1	0.63
2	1.27
3	1.91
4	2.55
5	3.19
H(m)	Dia (m)

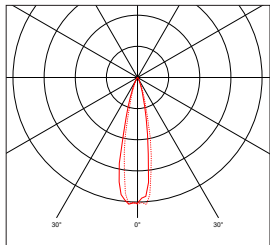


50°	
1	0.93
2	1.85
3	2.78
4	3.71
5	4.64
H(m)	Dia (m)

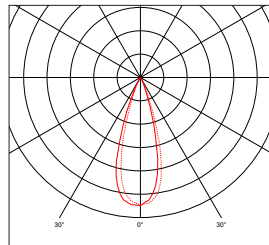
- (1) Height subject to the power module.
- (2) Electrical Data based on 90CRI, 3000K.
- (3) Tolerance range for optical and electrical data: ±10%.



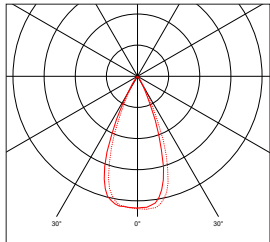
LED	Beam Angle	Lumen Source	Delivered Lumens	LOR (Up to)	Current	Forward Voltage	LED W	CRI	Macadam
High Power Module	23°	3590 lm	2925 lm	≤ 82%	700mA	35.5V	23W	>90	2 step
		4060 lm	3308 lm		800mA	36.0V	26W		
		4530 lm	3697 lm		900mA	36.6V	30W		
	32°	3590 lm	2981 lm	≤ 86%	700mA	35.5V	23W	>90	2 step
		4060 lm	3442 lm		800mA	36.0V	26W		
		4530 lm	3884 lm		900mA	36.6V	30W		
	40°	3590 lm	3062 lm	≤ 86%	700mA	35.5V	23W	>90	2 step
		4060 lm	3471 lm		800mA	36.0V	26W		
		4530 lm	3886 lm		900mA	36.6V	30W		
	52°	3590 lm	2750 lm	≤ 78%	700mA	35.5V	23W	>90	2 step
		4060 lm	3090 lm		800mA	36.0V	26W		
		4530 lm	3458 lm		900mA	36.6V	30W		



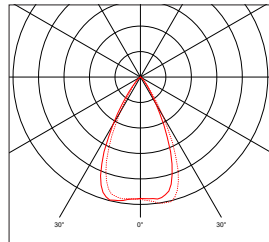
23°	
1	0.40
2	0.80
3	1.20
4	1.60
5	2.00
H(m)	Dia (m)



32°	
1	0.58
2	1.15
3	1.73
4	2.31
5	2.89
H(m)	Dia (m)



40°	
1	0.79
2	1.58
3	2.37
4	3.17
5	3.96
H(m)	Dia (m)



52°	
1	1.02
2	2.03
3	3.05
4	4.07
5	5.09
H(m)	Dia (m)

(1) Height subject to the power module.
 (2) Electrical Data based on 90CRI, 3000K.
 (3) Tolerance range for optical and electrical data: ±10%.