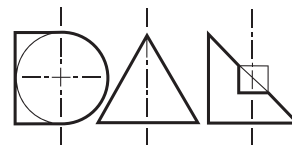


M-FLUX M4-110 - SUMMARY



M-FLUX M4 recessed downlighter with standard white ceiling trim and a choice of deep cone reflector finish and beam distribution. The high-quality precision lens and deep cone aluminium reflector gives visual comfort. Driver mounted remotely.

The M-FLUX M4 is easy to install and incorporates the latest, high efficiency LED technology. Colour consistency through life is ensured by state-of-the-art components and passive cooling aluminium heat sinks.

Standard colour temperatures: 2700K, 3000K, 4000K, colour rendering Ra>90 2-step Macadam are all available. Life 50000 hours.

A choice of drivers provide fixed supply or dimming to project requirements. IP20/IP44/IP54 durable, high specification die-cast construction.

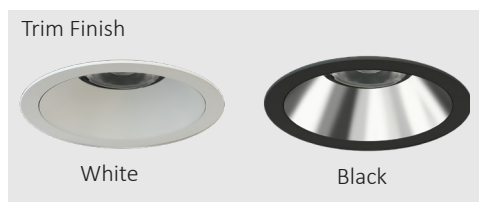


LED	Beam Angle	Lumen Source	LED W	CCT	CRI	Macadam	IP Rating
Ultra Narrow Module	10°	700 lm	6W	2700K, 3000K, 4000K	>90	2 step	IP20, IP44, IP54
Narrow Module	13°	1300 lm 1600 lm	11W 15W	2700K, 3000K, 4000K	>90	2 step	IP20, IP44, IP54
Standard Module	19°, 25°, 40°, 55°	1730 lm 1950 lm 2170 lm 2380 lm	11W 13W 15W 17W	2700K, 3000K, 4000K	>90	2 step	IP20, IP44, IP54

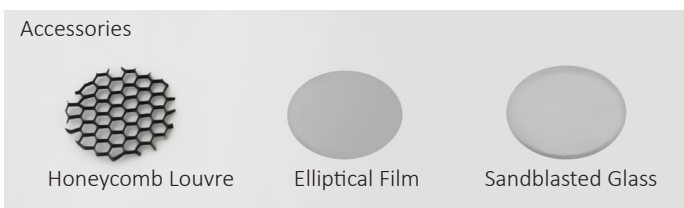
Standard Reflector Finishes

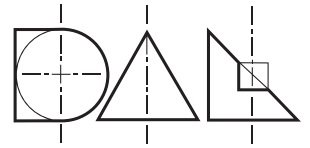


Trim Finish

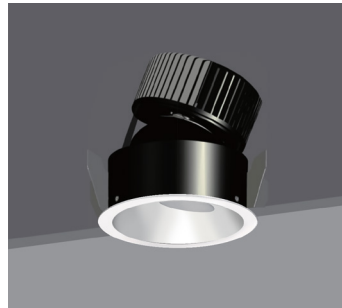


Accessories





Fixed Round



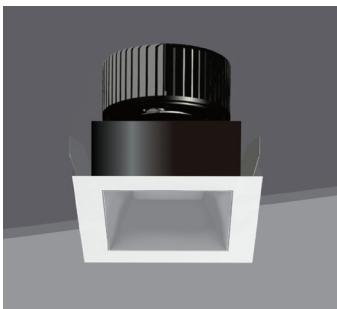
Directional Round



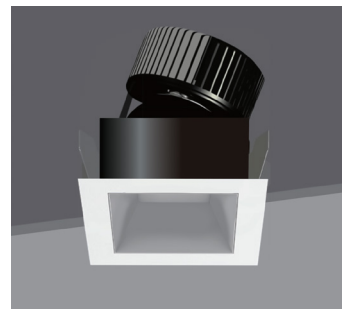
Wallwasher Round



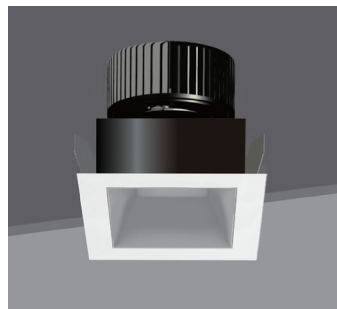
Trimless Round



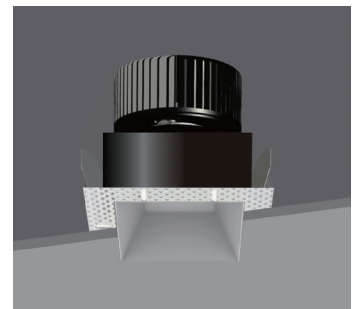
Fixed Square



Directional Square



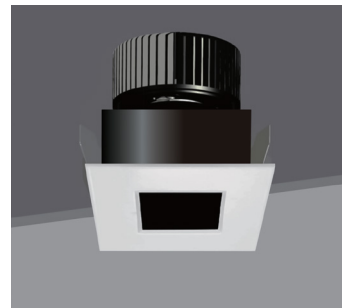
Wallwasher Square



Trimless Square



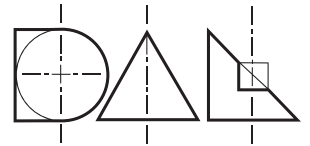
Pinhole Round



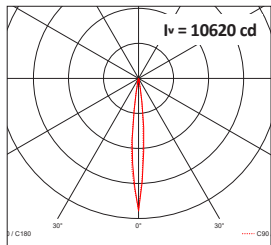
Pinhole Square

PRODUCT CODING EXAMPLE: M4F3107J350R320

Series	Type	Distribution	Reflector Colour	Initial Lumens	LED	Colour Temp	Driver Protocol	Emergency Protocol	Shape	Trim Colour	IP	Accessories
M4	F FIXED	1 1-10°	1 SPECULAR SILVER	07 700 lm	J CREE	2 2700K	0 NON DIM	0 NONE	R ROUND S SQUARE	L Trimless	2 IP20	0 NONE
	A ADJUSTABLE	2 11-20°	2 SATIN SILVER	23 2380 lm		3 3000K	1 1-10V	E EMERGENCY		3 Black	4 IP44	1 HONEYCOMB
	S SINGLE	3 21-30°	3 BLACK	etc		5 4000K	5 DALI			4 White	5 IP54	2 ELLIPTICAL FILM
	D DOUBLE	4 31-40°	4 WHITE				7 LEAD / TRAIL					3 FROSTED GLASS
	WALLWASH	5 41-50°	5 GOLD				8 CASAMBI					
		6 51-60°	6 BRONZE				9 ADDRESSABLE (EMERGENCY)					
M4	F	3	1	07	J	3	5	0	R	3	2	0

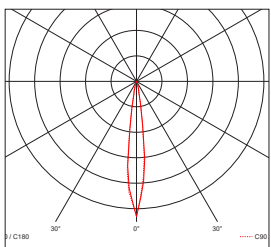


LED	Beam Angle	Lumen Source	Delivered Lumens	LOR	Current	Forward Voltage	LED W	CRI	Macadam
Ultra Narrow Module	10°	700 lm	533 lm	≤ 76%	700mA	9.3V	6W	>90	2 step



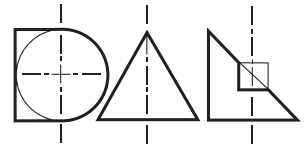
10°	
1	0.18
2	0.35
3	0.53
4	0.71
5	0.88
H(m)	Dia (m)

LED	Beam Angle	Lumen Source	Delivered Lumens	LOR	Current	Forward Voltage	LED W	CRI	Macadam
Narrow Module	13°	1300 lm 1600 lm	1053 lm 1321 lm	≤ 86%	350mA 450mA	33.9V 33.3V	11W 15W	>90	2 step

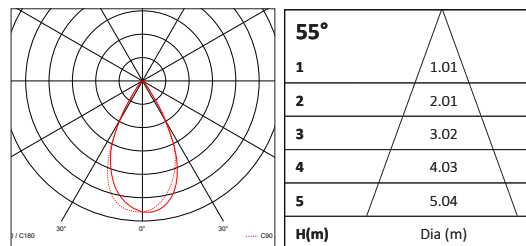
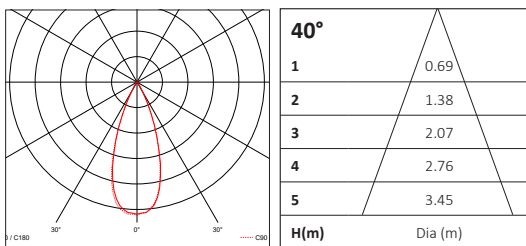
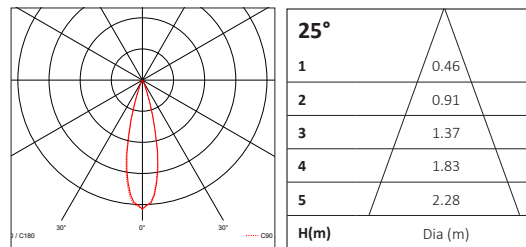
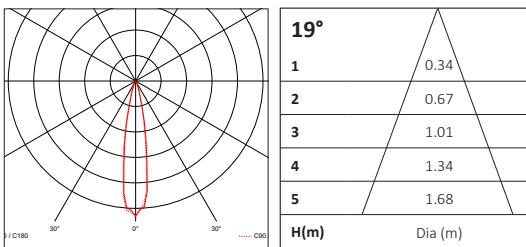


13°	
1	0.23
2	0.46
3	0.69
4	0.92
5	1.15
H(m)	Dia (m)

- (1) Height subject to the power module.
- (2) Electrical Data based on 90CRI, 3000K.
- (3) Tolerance range for optical and electrical data: ±10%.



LED	Beam Angle	Lumen Source	Delivered Lumens	LOR	Current	Forward Voltage	LED W	CRI	Macadam
Standard Module	19°	1730 lm	1333 lm	≤ 77%	350mA	33.3V	11W	>90	2 step
		1950 lm	1464 lm		400mA	33.7V	13W		
		2170 lm	1634 lm		450mA	34.0V	15W		
		2380 lm	1795 lm		500mA	34.3V	17W		
	25°	1730 lm	1514 lm	≤ 88%	350mA	33.3V	11W	>90	2 step
		1950 lm	1666 lm		400mA	33.7V	13W		
		2170 lm	1861 lm		450mA	34.0V	15W		
		2380 lm	2049 lm		500mA	34.3V	17W		
	40°	1730 lm	1519 lm	≤ 87%	350mA	33.3V	11W	>90	2 step
		1950 lm	1672 lm		400mA	33.7V	13W		
		2170 lm	1868 lm		450mA	34.0V	15W		
		2380 lm	2056 lm		500mA	34.3V	17W		
	55°	1730 lm	1412 lm	≤ 83%	350mA	33.3V	11W	>90	2 step
		1950 lm	1579 lm		400mA	33.7V	13W		
		2170 lm	1780 lm		450mA	34.0V	15W		
		2380 lm	1967 lm		500mA	34.3V	17W		



- (1) Height subject to the power module.
- (2) Electrical Data based on 90CRI, 3000K.
- (3) Tolerance range for optical and electrical data: ±10%.